

## temperature measurement

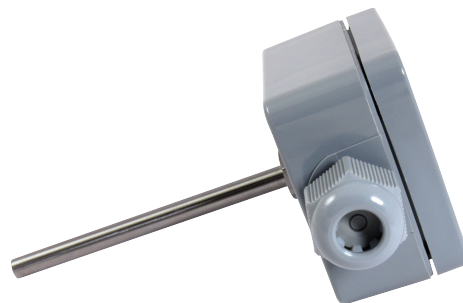
### resistance thermometer WTR 230

#### features

- resistance thermometer without neck tube
- connection head made of plastics polyamide PA6
- flat protective fitting without process connecting thread
- protective fitting adaptable with different clamp screw fittings
- protective fitting adaptable with different weld-in screwings
- available with tapered measuring point
- protective fitting screwed with connecting head
- temperature resistance PT100 directly constructed in protective fitting
- electrical connection on the board (clamps)  
or programmable measuring transducer
- specials on request

#### technical specifications

- protective fitting made of stainless steel 1.4571 (V4A)
- length of sensor selectable
- connecting box made of polyamide PA6
- size of box 58 x 64 x 35 mm
- type of protection IP 65
- standard temperature: -50 °C to +130 °C  
with measuring transducer: -40 °C to +85 °C

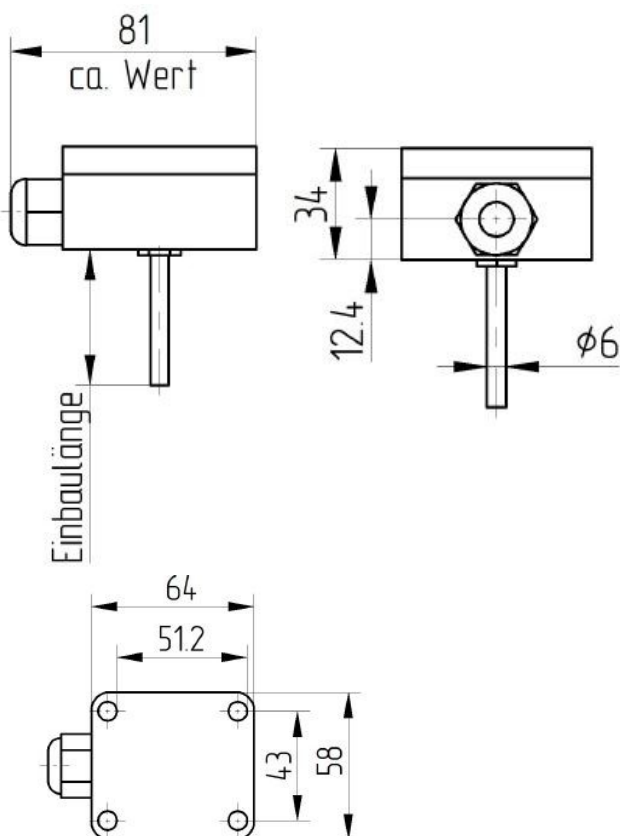


WTR 230-A1-A-1A3

#### product benefits

The WTR 230 is the ideal immersion sensor for the refrigeration, air conditioning and ventilation industry for temperature measurement in pipes and containers. Due to the smooth protection fitting, it is possible to select the immersion depths flexibly. In addition, the sensor has a robust polyamide PA6 housing, which gives the sensor a high longevity and temperature resistance despite a very good price/performance factor.

#### technical drawing



## temperature measurement

order-code WTR 230...

order example: WTR 230-A1-A-1A2-KMU

### position of gland of protective fitting (sensor)

-A1 protective fitting (sensor) below

### mounting length

-A 50 mm mounting length  
 -B 100 mm mounting length  
 -C 150 mm mounting length  
 -D 200 mm mounting length  
 -E 250 mm mounting length  
 -F 300 mm mounting length  
 -G 350 mm mounting length  
 -H 400 mm mounting length  
 -K mounting length on customer's request (please specify length)

### type of sensor and tolerance

-1A2 1xPT100 class A 2-wire  
 -1A3 1xPT100 class A 3-wire  
 -1A4 1xPT100 class A 4-wire  
 -2A2 2xPT100 class A 2-wire  
 -2A3 2xPT100 class A 3-wire  
 -KX types of sensor and tolerance on customer's request

### optional

-KMU with programmable measuring transducer

### accessories

#### clamp screw fittings

-99-000197 KVS6E-1/2" clamp screw fitting  
 -99-000199 KVS6T-1/2" clamp screw fitting with screw-in thread, for 6mm sensor, clamping ring made of Teflon, material 1.4571  
 -99-000512 KVS6E-1/4" clamp screw fitting  
 -99-000198 KVS6T-1/4" clamp screw fitting  
 -99-000196 KKVS6P bullet clamp bolting, for 6mm tube, PEEK sealing ring, material 1.4404

#### immersion pockets

-99-000456 THVA, 100mm, in G1/2", dimension 9x1, diameter immersion pocket 9mm, inner diameter 7mm, material VA, with M4 screw in the hexagon  
 -99-001938 THVA-KVS 100mm, in G1/2", sleeve dimension 9x1mm, inner diameter 7mm, with clamp screw fitting for 6mm probe, with PTFE clamping ring  
 -99-002871 ESTHK, 50mm, welding immersion pocket, diameter pocket 9x1mm, with clamp screw fitting PEEK, material 1.4404